



GenevaLogic

ACTIVE TEACHING SYSTEMS

Vision⁶

Classroom Management System

Quick Start Guide

Prior to starting installation of Vision6 in your classroom, log in with an account that has administrative privileges on both the teacher and student computers. If you're running the Windows Firewall, configure it to allow File and Printer sharing on the Exceptions tab on all student computers.

Installing Vision6 in your classroom

1. Double-click the Vision6 setup program.
2. Click **Next** at the "Welcome to the InstallShield Wizard for Vision6" screen.
3. Read and accept the License Agreement and click **Next**.
4. Enter a **User Name** and **Organization** name in the "Customer Information" screen.
5. For the Setup Mode, select **Install** and click **Next**.
6. For the Setup Type, select **Vision6 Master** and click **Next**. (Figure 1)
7. **30-Day Trial Users:**
Click **Next** in the Licensing screen to begin a 30-day trial of Vision.
8. **Vision Customers:**
Enter your license key(s) in the appropriate field to activate your Vision purchase. (Figure 2)
9. In the "Simple/Advanced Setup" screen, select **Simple Setup** and click **Next**.
10. Click **Install** to begin the installation of Vision6 on the teacher's computer.
11. When the "InstallShield Wizard Completed" screen appears, click **Finish** to launch Vision.
12. Click **OK** to close the "Welcome to Vision Evaluation" screen.
13. When the "Welcome to Vision6" message appears, make sure your student computers are on and click **Yes**.

Figure 1

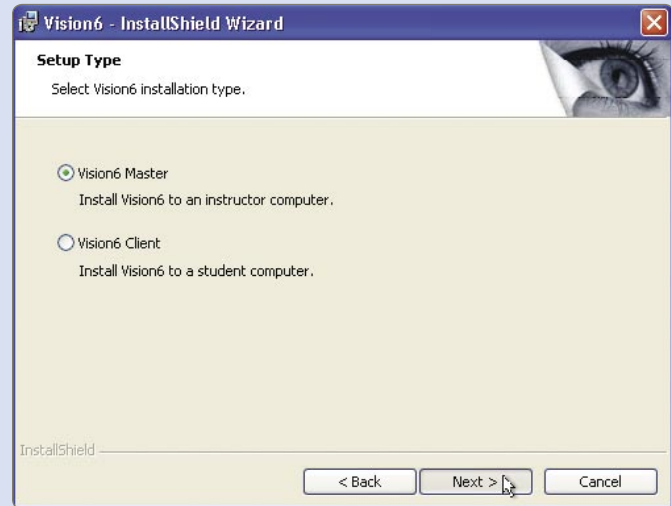


Figure 2



13. Click **Next** when the “Welcome to the Vision6 Classroom Wizard” screen appears.

14. To setup student computers in your classroom:

a) Select your Domain/Workgroup from the drop down box. If you do not know your Domain/Workgroup name, select the asterisk (*).

b) You may also enter a text string in the Filter box to filter which computers appear in the Network computers pane.

► **Example:** If all computers in Room 205 have the characters 205 in their name, enter 205 in the Filter box. Only the computers that include this text string will appear.

c) Click ► to move the computers into your classroom. (Figure 3)

15. Click **Next** to continue.

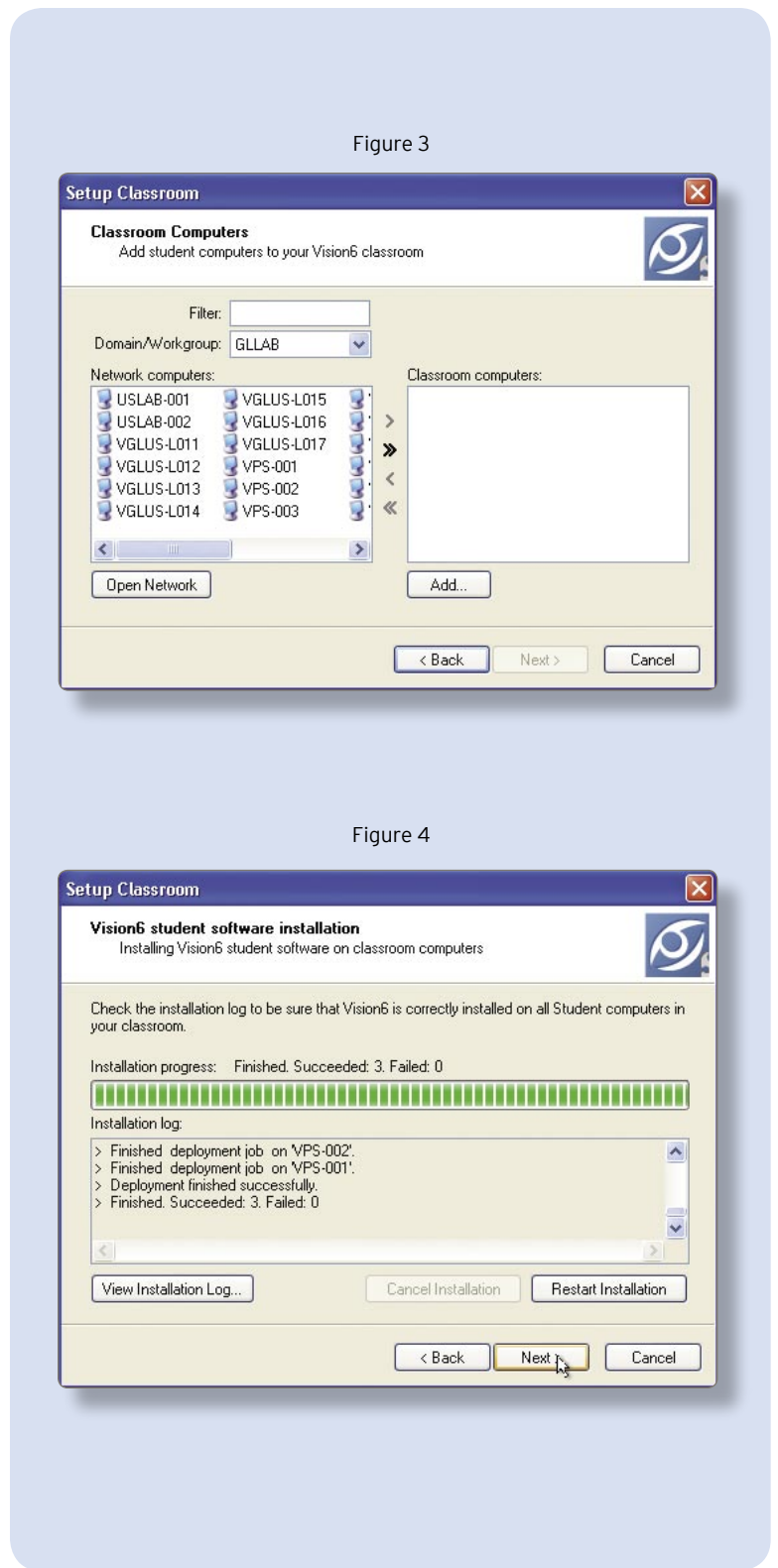
16. Select “I want to install or update Vision6 software on my student computers” and click **Next**.

17. When the installation completes, click **Next**. (Figure 4)

► **Note:** If the installation fails on any of your student computers, click the View Installation Log for more details.

18. When the “Classroom Setup Complete” screen appears, click **Finish**.

► **Note:** It will take a few minutes for your student computers to reboot before they will connect to your classroom.



Technical Support

NORTH AMERICA
Toll-Free 866-725-7803
Monday - Friday
7:30AM-4:30PM (Pacific Time)

ALL OTHER LOCATIONS
Please contact the GenevaLogic distributor in your area. For a list of distributors, visit www.genevalogic.com



GenevaLogic

ACTIVE TEACHING SYSTEMS

UNITED STATES
15725 SW Greystone Court, Suite 105
Beaverton, OR 97006
503.233.3093
Fax 503.236.6403

SWITZERLAND
Chasseralstrasse 1-9
CH-4900 Langenthal
+41 (0)62 957 70 40
Fax +41 (0)62 957 70 50

www.genevalogic.com